

Fjaðrárgljúfur Canyon

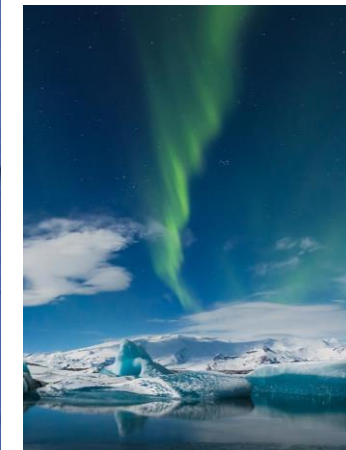
335 ha of Natural wonders

2018: 200.000 visitors

“Looks like a Game of Thrones or a Lord of the Ring scene ! Awesome !”



A great natural attraction in the middle of the southern scene of Iceland





...marvelous photography scenery...

Lies directly from the ring road..

“According to the latest data from the Icelandic Tourist Board, a total of 2,195,271 tourists visited Iceland in 2017. This is up from 1,767,726 the year before”

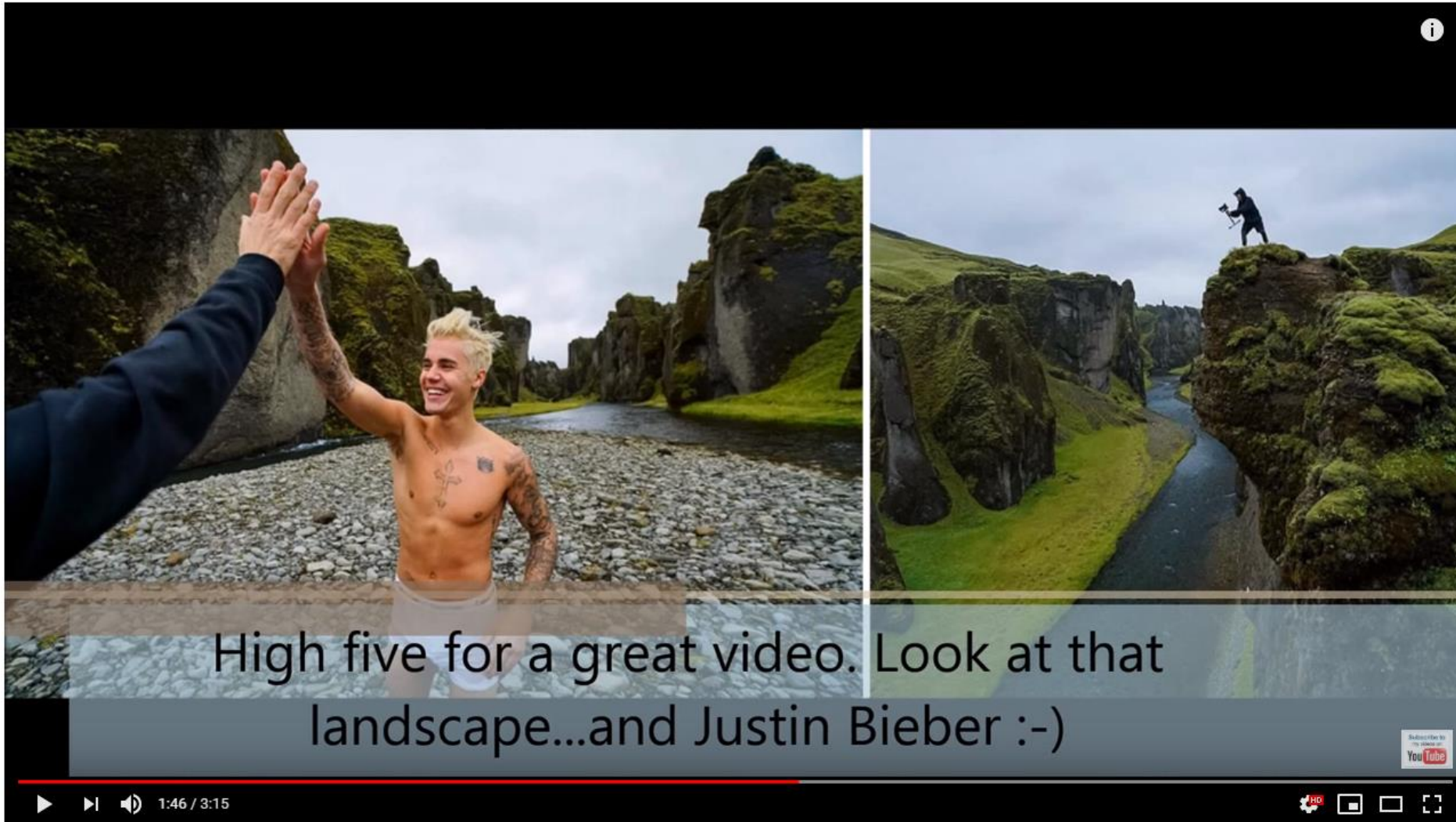
2016:

70.000 visitors of the canyon

2018:

200.000 visitors of the canyon





The video is presented in a split-screen format. The left side shows a close-up of Justin Bieber, shirtless and smiling, high-fiving a person whose hand is visible from the left. The right side shows a wide shot of a person standing on a mossy cliff edge, filming a river flowing through a canyon. The landscape is rugged with green moss on the rocks and a cloudy sky.

High five for a great video. Look at that landscape...and Justin Bieber :-)

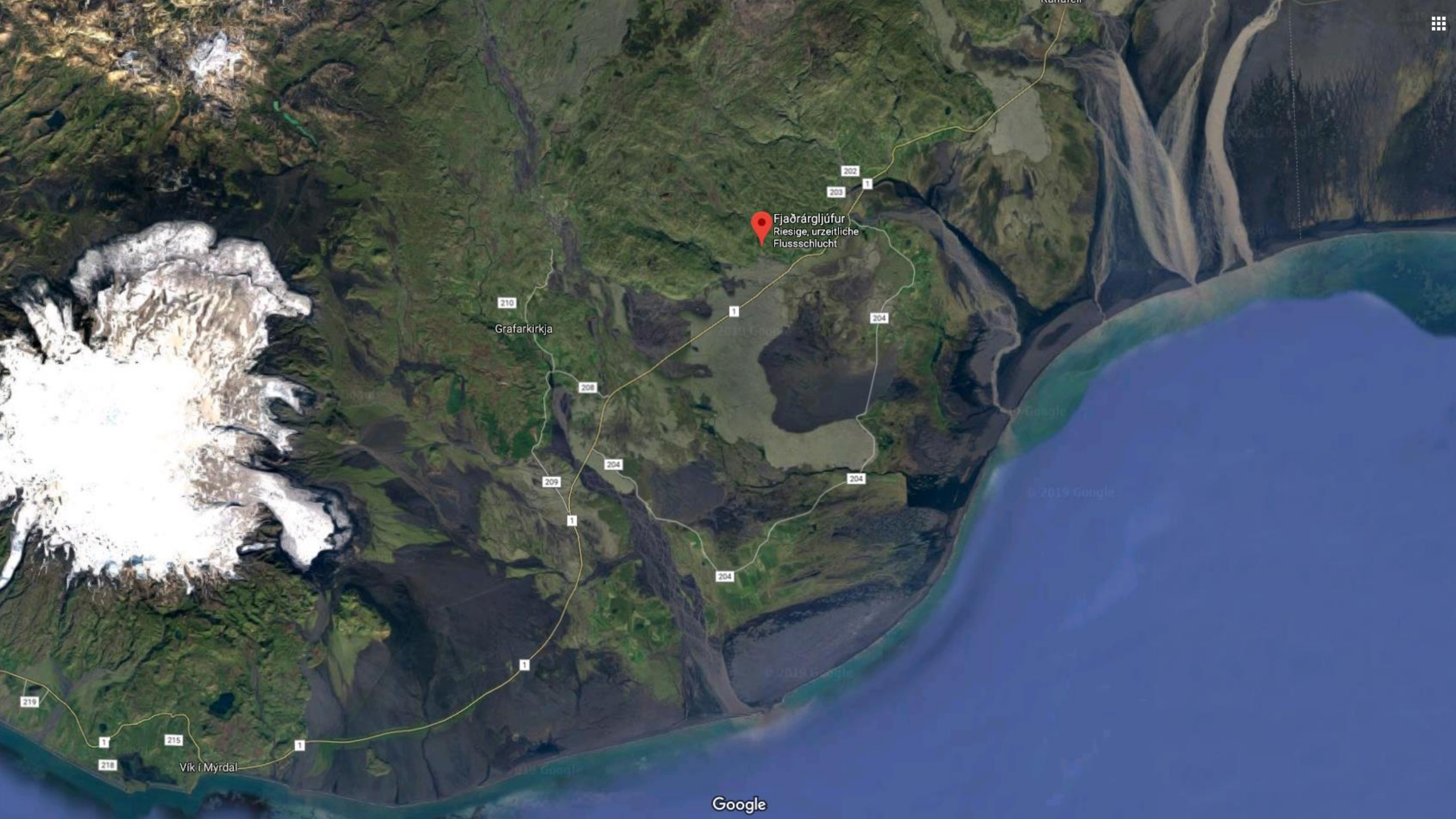
1:46 / 3:15

🔧 📺 📱 🗑️

Justin Bieber | I'll Show You | Behind the Scenes Making the Video [Audio] #Iceland

588.265 Aufrufe

👍 3000 💬 160 ➦ TEILEN 📌 SPEICHERN ⋮



Fjaðrárgljúfur
Riesige, urzeitliche
Flussschlucht

210
Grafarkirkja

208

209

204

204

204

202

203

219

215

218

Vík í Mýrdal

Google

© 2019 Google

© 2019 Google

© 2019 Google



Fjaðrárgljúfur

Kirkjubæjarklaustur

Þjóðvegur

Þjóðvegur

Þjóðvegur

Google

Facts & Figures

- Heiði real estate number 163354
- District: Vestur-Skaftafellssýsla

- The total size of the land is over 335 ha.
- Including a spectacular pastureland, drawn riverbed, hills, and valleys.

- An old cabin and an old sheep assembly station represent the potential the land has agriculturally.

- The increase of tourist visitation of the land has led to the reconstruction of the gravel road linking the land to the ring road. The municipality has also facilitated the construction of a lavatory and a parking lot .

- In the middle of the area is a small section assigned about 2 ha that is used for afforestation.

